

Frequency Friday!

Financial Frequency

elevate your frequency!



IS YOUR COLLEGE STUDENT'S SCHOLARSHIP TAXABLE?

May 1 is the traditional deadline for undergraduate students to commit to their college of choice, which means tuition payments are not far behind. If you are wondering if your child's scholarships are taxable, here is what you should know.

WHAT IS A "SCHOLARSHIP?"

First, it's important to understand how a scholarship is defined. Generally, a scholarship is an amount paid or allowed to a student at an educational institution for the purpose of study. It can include both merit and need-based institutional aid.

Other types of grants include need-based grants (such as Pell Grants or state grants) and Fulbright grants. A fellowship grant is generally an amount paid or allowed to an individual for study or research.

Fulbright grants may be either scholarship/fellowship income or compensation for personal services, which is usually considered wages. If you are a U.S. citizen recipient of a Fulbright grant, you must determine which income category your grant falls into to know how the grant is taxed for U.S. Federal Income tax purposes.

TAX-FREE VS. TAXABLE

If your child receives a scholarship, a fellowship grant, or other grant, all or part of the amounts received may be tax-free if your child meets certain conditions.

Have Questions? Want to learn more about what you can do to have a healthy financial plan? Book your Mid-year Tax planning appointment today!

[> BOOK NOW](#)

Scholarships, fellowship grants, and other grants are tax-free if:

- The student is a candidate for a degree at an educational institution that maintains a regular faculty and curriculum and normally has a regularly enrolled body of students in attendance at the place where it carries on its educational activities; and
- The amounts the student receives are used to pay for tuition and fees required for enrollment or attendance at the educational institution or for fees, books, supplies, and equipment required for courses at the educational institution.

However, the student must include in gross income:

- Amounts used for incidental expenses, such as room and board, travel, student health insurance, and optional equipment.
- Amounts received as payments for teaching, research, or other services required as a condition for receiving the scholarship or fellowship grant. However, students do not need to include in gross income any amounts received for services that are required by the National Health Service Corps Scholarship Program, the Armed Forces Health Professions Scholarship and Financial Assistance Program, or a comprehensive student work-learning-service program (as defined in section 448(e) of the Higher Education Act of 1965) operated by a work college.

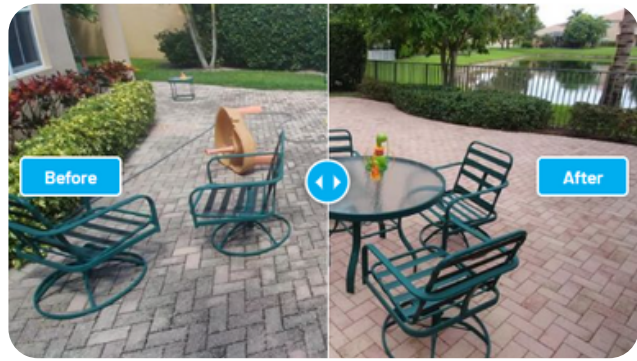
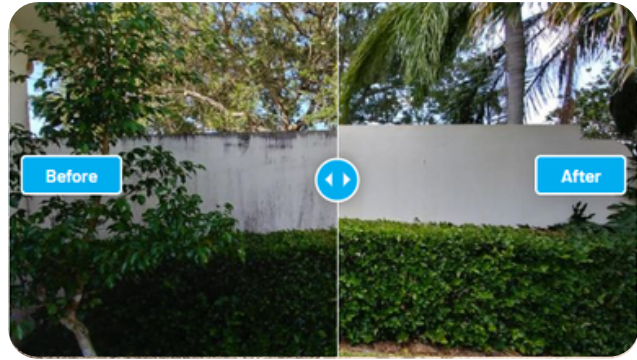
REPORTING A TAXABLE SCHOLARSHIP ON YOUR TAX RETURN

- Generally, a student reports any portion of a scholarship, a fellowship grant, or other grants that must be included in gross income as follows:
- If filing Form 1040, include the taxable portion in the total amount reported on the "Wages, salaries, tips" line of the student's tax return. If the taxable amount was not reported on Form W-2, enter "SCH" along with the taxable amount in the space to the left of the "Wages, salaries, tips" line.
- If filing Form 1040-NR, report the taxable amount on the "Scholarship and fellowship grants" line



Frequency Friday! Bulletin Board

Revitalize Your Property's Beauty with Marlin Softwash! We use eco-friendly agents and cutting-edge equipment to deliver exceptional results for your home or business. Experience hassle-free service and outstanding transformations. Contact us today for a free estimate!



- Services:
- Pressure Washing
 - Roof Cleaning
 - House Washing
 - Paver Sealing

561-309-4138
www.marlinsoftwash.com
info@marlinsoftwash.com

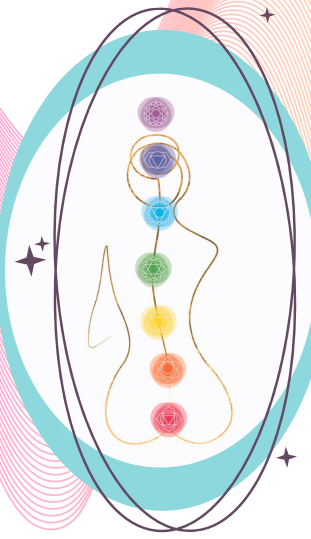


A Clean That Will Transform Your Property
Our Pressure Washing Service Will Restore
The Look Of Your Home Or Business

Upcoming Events with Vibration and Frequency 432!

If you are a Health & Wellness practitioner or interested in being a Vendor at our 11/11 Expo, Come Join us on Saturday 8/26 from 2-4pm!

Alton Clubhouse 13255 Alton Rd. Palm Beach Gardens, FL 33418
Limited space available!
RSVP to:
info@vibration432.com



Frequency Friday! Bulletin Board



Join Our

MINDFULNESS MEDITATION AND SOUND HEALING WORKSHOP

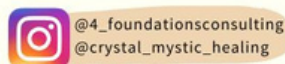
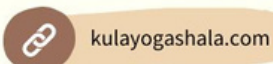


SIGN UP NOW

AN IMMERSIVE JOURNEY FOR THE PRACTITIONER

Saturday July 22nd 12:30-4pm

Investment \$100



Curious about Mindfulness Meditation and Sound Healing and the benefits of both? Whether you are a health and wellness practitioner, helper or student looking to deepen your practice, this workshop is for you!

Join Chris and Jennifer, both Yoga Teacher graduates of Kula Yoga Shala, on Saturday 7/22 at 12:30 for an experience you dont want to miss!

REGISTER NOW >



GET YOUR COSMIC *Mojo* ON

We are **Spirit** having a human experience

by Hattie Parker, MS Ed, Astrologer, Numerologist & "Yes I Can" Creator/Coach

2023 Red Hot Summer of Cosmic Retrogrades (Re-evaluations)

Moon Phase Awareness : For Personal and Business and Well-being



July 21 - July 27

Crescent: Favors overcoming obstacles; **1st Quarter:** Favors getting needed tasks accomplished.

Current Retrograding Planets of Summer of 2023

- **5/1 – 10/10/23** Pluto in Capricorn: Disruptions to business (i.e. banks, child trafficking) inspiring re-assessment of what constitutes good financial and/or moral management.
- **6/17 – 11/4/23** Saturn in Pisces: Saturn does not like to be in free-flowing Pisces. Structures challenged and changing – most people don't like change and Saturn is a cosmic disciplinarian – this is an unsettling retro mojo. You may discover you feel discouraged about the state of the world.
- **6/30 – 12/6/23** Neptune in Pisces: Neptune is happy in Pisces, it is its home base and however because of Saturn's Piscean influence many may experience challenges to their ability to hold on to faith, trust, and optimism.

Additionally, the moon's nodes naturally move counterclockwise, thus retrograde. The nodes changed signs on 7/17 influencing us to experience a sense of being in a tug-of-war between satisfying ourselves (Aries) or pleasing others (Libra). This will last 18 months. Taken all together this makes for times of feeling some confusion and challenge.

Retrograde Energy: Expanding and Demanding

Venus, the Planet that Rules Love and Money, starts Retrograding 7/22/2023 Chiron, the Planetoid that Rules Mental Health starts Retrograding 7/23/2023

7/22 – 9/3/23 Venus in King of the Beasts Leo a time to evaluate if you are doing a good job of self-care related to love and money

7/23 -12/27/23 Chiron in assertive Aries suggests we are in a time when we need to be willing to do whatever it takes (including sacrifice) to be healthy

Venus Retrograde, is an ideal time for introspection, reflection, re-evaluation about relationships love and money. Chiron Retrograde, supports healing and resolution of previously unforgiven issues. It is an excellent time to work on unresolved aggravation and personal or business challenges. More will be shared about Chiron and healing in future Mojos. If you choose to learn more I recommend the following youtube <https://www.youtube.com/watch?v=th1AnOwi5w>



About Phases & "Phases:" Going with the Cosmic Mojo Flow of Well-Being

The Moon has everything to do with our emotions and managing emotions. Phases and Phases of the Moon is a guide to working with the Moon to support well-being.

The face on the moon is often referred to as "The Man on the Moon." However, the Moon is a feminine planet. Knowledge is power! Know about and partner with the energies of the Cosmos and be better prepared and able to Go **with** the Flow in life.

Moon Phase Awareness : For Personal and Business and Well-being



★ ★ July 21 - July 27

Crescent: Favors overcoming obstacles, **1st Quarter:** Favors getting needed tasks accomplished.

1. New;
2. Crescent;
3. 1st Quarter;
4. Waxing Gibbous;
5. Full;
6. Waning Crescent;
7. Last Quarter;
8. Waning Gibbous

Aug 9 - Aug 15

Project Management

Rest, Restore & Maintain

Personal Energy Management

Seek to be self-caring through integrating insights and lessons learned

July 17 - July 24

Project Management

Creative Problem Solving

Personal Energy Management

Seek to connect to unstoppable Universal sustaining life force energy

Aug 1 - Aug 8

Project Management

Educating, Sharing & Promoting

Personal Energy Management

Seek to be proud to be shining your light into our Universe

July 25 - July 31

Action and Course Correction

Personal Energy Management

Seek to connect with the joy of trusting that you live in a user-friendly Universe

